

NEW GENERATION

SKI & SNOWBOARDING SCHOOL ●●●●●

GAP COURSE VERBIER 2013

JOIN US IN VERBIER THIS WINTER
30 NOV 2013 – 8 FEB 2014

Please read the terms and conditions before signing up to the course.

Please think of the environment before you print this document.

CALL 0844 770 4733,
EMAIL instructorcourses@skinewgen.com
or visit www.skinewgen.com/gap
for more info





The New Generation Gap Course, Verbier

We have a proven track record of helping people reach their skiing goals and teach over 15,000 clients every year. Alongside our ski schools, we also provide instructor training at all levels. Over the last ten years our instructor students have successfully trained towards their BASI exams (levels 1- 4), as well as using our support system to develop into BASI trainers, managers and ski school directors.

Joining our Verbier GAP course puts you at the heart of that unique instructor pathway. Our Verbier team is one of the most vibrant and committed in the industry, all at the top of their game, either about to qualify or qualified at BASI Level 4.

This focused environment will put you in the best possible position to pass your Level 1 and 2. You will also have a solid and exciting career platform should you wish to take your ski instructing further.

BASI & The Professional Coaching Team



New Generation is a British run ski school set up by Tom Saxlund and 3 other BASI

trainers in 1998. Over the last 15 years we've recruited some of the best British and international coaches to work alongside us and help to train the future personalities of British ski instruction. In 2013 we had over 15 BASI trainers and instructors working with New Generation. Here's some of the team that will be training you.



NEW GENERATION VERBIER INSTRUCTOR TEAM



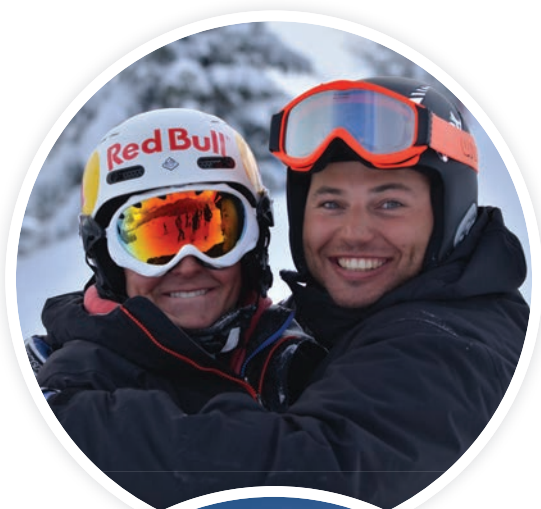
Welcome to the New Generation GAP Course



Why join the New Generation gap course?	3
Introduction to the course	4
Pre-requisites and pre-selection	5
Our course mentors	6
Performance ski coaching	6
Shadowing	7
Careers and support	8
Off snow care	8
The New Generation Pathway	9
Training and working	10
Individual Development Assistance	11
Student perks	12
Free course extras	13
Overview of the course	14
A day in the life of gap	14
Course programme	15 - 17
Travel and insurance	19
Catered chalet accommodation	20
How to book for 2014 course	22
T&Cs	23

CALL 0844 770 4733,
EMAIL instructorcourses@skinewgen.com
or visit www.skinewgen.com/gap
for more info

Why join the New Generation course?



FIRST STEP ON THE PATHWAY TO A SUCCESSFUL INSTRUCTOR CAREER

We are the only ski school to offer you training from the first day of the BASI level 1 right through to becoming a ski school director and managing your own ski school.

Whether you “only” want 10 awesome weeks of skiing in Verbier, or you are taking the first step towards a professional career, we look forward to helping you reach your goals.

THE BEST TRAINING FROM THE BEST SCHOOL

We have many years of experience delivering gap courses and have more BASI trainers than any other ski school. All our Verbier instructors are hand picked from many applicants.

Our clients tell us we are great (see website). This is because the best instructors deliver the best coaching. Become part of our very special team in Verbier.

EXTEND YOUR SEASON

Fancy staying on after the course? We organise extended weeks combining free skiing, training and teaching. Some students have the chance to join our BASI Level 3 Work & Train Program (see website) after the Gap course. Deliver real lessons, develop your own skiing and work towards Level 3. Last season this team had a 100% Level 3 pass rate!

A FREE NORTH FACE FREERIDE JACKET

Every student receives a fantastic Freeride jacket (a black decagon from The North Face).

AND... DON'T FORGET YOUR FREE FREERIDE JACKET

Every student receives a fantastic freeride jacket (a black decagon) from The North Face.



Introduction to the course

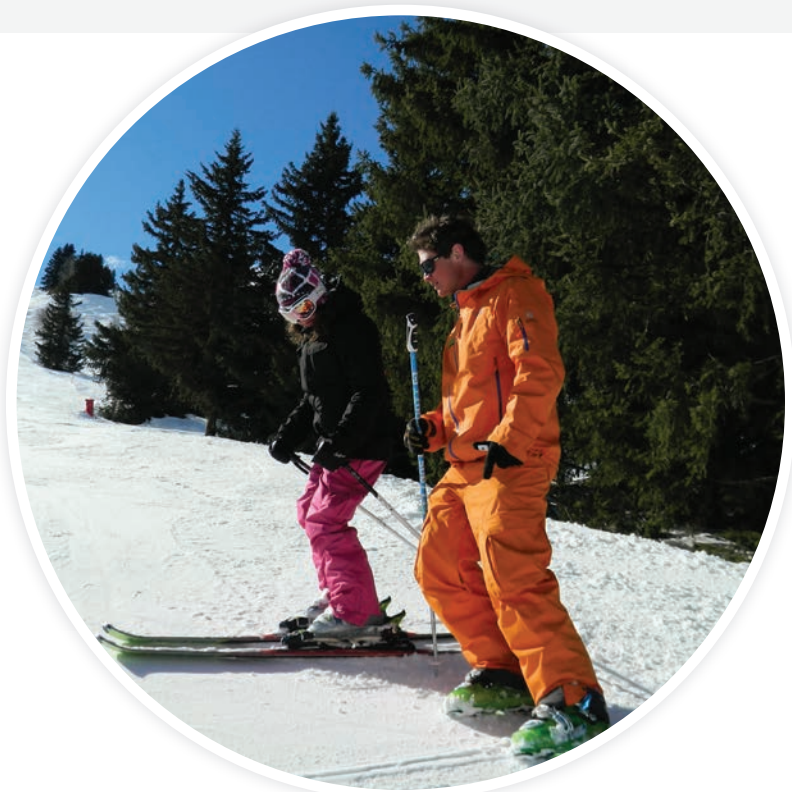


The New Generation Gap Course is great fun, yet hard work. Whilst attending the gap course you are in a snowsport environment 100% of the time. The intention is for all students to be immersed in the culture and way of life of a snowsport instructor and to be totally focused on the outcome.

The gap course is a fantastic opportunity to obtain a British ski instructor qualification in just ten weeks. All of our students take their BASI Ski Instructor exams as part of the gap course.

Our gap course is based in Verbier Switzerland.

All students receive expert coaching from New Generation's ISIA or ISTD qualified instructors. As well as on-snow coaching, training includes evening sessions and use of video. Each student is assigned a mentor who will look after the students on and off the snow, ensuring a gap experience they will remember for life. Students also have ample opportunity to experience the social side of ski life.



AND... DON'T FORGET YOUR FREE FREERIDE JACKET

Every student receives a fantastic freeride jacket (a black decagon) from The North Face.

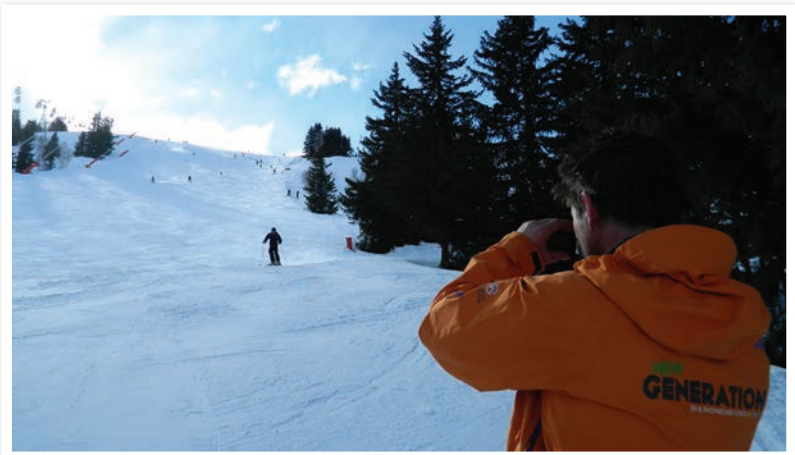


Are you the right standard for the course? The BASI standard of entry to the gap course is to:

1. Be able to ski parallel confidently, coping with a variety of conditions, and have completed a number of weeks skiing on snow.
2. Ski parallel confidently on black runs, being able to make rhythmical turns close to the fall line at a steady pace.
3. Confident skiing in control in off piste conditions.

You may be asked to attend a pre-assessment to ensure your skiing is at the required level before the course starts. We hold pre-assessments as part of our open days at snow domes in the UK.

If you would like to attend please contact us on the details below.



Open days

If you are interested in becoming a ski instructor then you can attend our free open days at one of the UK indoor ski centres.

The open days are a great way to meet our training team, ask questions, and for our trainers to assess your skiing level to ensure that you are of a suitable level to start the course.

Open day programme:

- Welcome & introduction
- Ski with a trainer
- Ski instructor programme
- Question and answer session

TO SIGN UP TO AN OPEN DAY OR TALK TO A TRAINER...

CALL 0844 770 4733 OR EMAIL INSTRUCTORCOURSES@SKINEWGEN.COM



Our course mentors

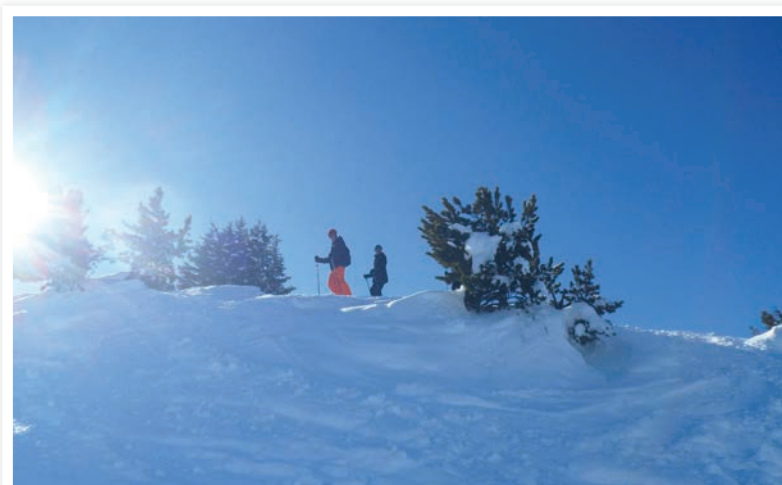
Each student is allocated a mentor to train and guide them through the course. Students will receive training from BASI ISIA, ISTD (ISTD is the highest BASI level) and Swiss Patente instructors (the highest Swiss level of qualification).



Performance ski coaching

The mentors provide high level performance ski coaching. They will give each student a written action plan for their skiing and teaching which is continuously updated during the course. All this follows our Individual Development Assistance Programme which you can read about on page 11.

Off snow they will provide video analysis and feedback, as well as the necessary training on ski theory, presentation skills and teaching. We find that the mentor system allows us to follow a student's progression closely, and provide individual help and support for all aspects of the course.



Shadowing

As part of the course students shadow our in house ski school lessons. Lessons will be for adults or children and from beginners through to advanced skiers. We make sure that they are exposed to different types of lesson so that they are able to learn some secrets about great teaching and receive first hand work experience of a working ski school. All students will keep a log book while shadowing to help with their own lesson plans.

Unlike many schools in Switzerland all our instructors are ISIA qualified. This means that students will be exposed to a high level of instruction during this period of work experience.



Careers seminar and support

During the course we run a careers seminar. This is an introduction from leading snow sports instructors on moving forward within the industry. A summary of the BASI system and its requirements beyond level 2 is also provided.

On successful completion of the course we can arrange for students to work in a ski school for the week - ask our course advisers for more details.

Careers support and off snow care Students will hear from different ski schools talking about what they look for in an instructor. They can get help with CV writing, and are provided a list of our main recruitment and career contacts gathered over years in the industry in order to make sure that they have good prospects following the course.



Off snow care

Living in a ski resort is so much easier when you have a little background knowledge of the resort. To help students with the non-skiing aspects of the course we have an off snow coordinator on hand to help out. They are always at the end of the phone during the course to answer questions and solve any issues. This help can be anything from showing where the chemist is to helping with CV writing.



The New Generation Pathway

New Generation is the only Ski School with Instructor Training at the heart of who we are; we train and support instructors across all levels through the BASI system.

For the last 9 years New Gen has helped gap students train for their Level 1 and 2 BASI exams on the Official BASI GAP course with great results. But we also offer training above and beyond the Level 1 and Level 2 BASI qualifications covered in the our gap course. In fact, we offer training for all levels of BASI qualification making us one of the foremost preparation and training providers for aspiring BASI ski instructors.

Our successful system of producing ski instructors at all levels means that we have a depth of knowledge, experience as well as resources that put us at the forefront of the field. We feel our comprehensive pathway helps us offer a more 'seamless' progression between the levels. It offers a 'trickle down' effect allowing our Level 2 courses to benefit from the experience of our Level 3 training and our Level 3 courses to benefit from the experience of our Level 4 training.

We run season long ISIA (BASI Level 3) training programmes - our Fastrack course in Courchevel with top BASI Trainers like Dave Morris, and we also partner with local schools in Nendaz to offer ISIA Level 3 work and train programmes.

New Generation Verbier Ski School have a selected training team of BASI Level 3 instructors who are training for their BASI Level 4.

And it doesn't stop when you qualify; from helping instructors attain their BASI Trainer qualification, to working as a New Gen resort manager, New Generation truly has instructor training, development and leadership at the heart of what we do.



New Gen gap race training



ISIA Level 3 video feedback



Verbier ISIA Level 4 training team



A full season training & working

This is our newest New Generation instructor training programme. You could complete our 10 week Verbier Gap Training and be a qualified level 2 instructor by Feb.

This means that you can then carry straight on to fastrack your career with our WORK+TRAIN programme in nearby Nendaz.

The WORK+TRAIN programme provides a unique combination of opportunities. We know that completing your qualifications can be a costly experience and as a qualified level 2 instructor you want to be working. The programme means you can have access to the highest level of training while earning money.

150 hours on and off snow training for your Level 3 ISIA qualifications

30 hours off snow training including fitness advise and video feedback.

80 hours (approx) paid work with our partner ski school Neige Aventure

Training programme cost:
2790 Swiss Francs.



Individual Development Assistance (IDA)



As an official BASI gap course we have created a programme which works alongside on snow ski training. Through years of experience we have identified specific areas which assist in skill development.

The IDA programme is aimed at helping the individual improve quickly and effectively. Along with the support of your mentors, this helps you get the most out of your performance training and maximises your on snow practice time.

Learner preference profile

We all learn differently. Effective learning involves a range of different learning activities. By understanding your own learner preferences you will be so much more effective in applying the course programme to your own skiing development.

Psychological performance training

Performance is improved when you are in the correct mental zone. Learning how to manage this is a vital part of progression towards success. We work on this with each gap student.

Ski and boot fitting

The right kit is key to being able to develop skills. Prior to the course our trainers can provide advice on boot and ski choice. Within resort we work with boot fitting experts The Boot Lab, and can arrange a fitting appointment on arrival to resort or during training if we feel it will help your skiing.

Skier alignment

Our experts are on hand to ensure students are standing on their skis in the most efficient way. If necessary, corrections can be made to boots and other equipment to aid strength and agility.

Support from your mentor

It might sound obvious, but as well as the right approach to practice, the most crucial part of your development is your mentor. Our mentors are all BASI ISTD level 4 coaches, who have years' of experience training gap students. They go out of their way to help you get the most out of your time on the course; whether it's helping you write lesson plans, or extra sessions for video feedback or simply being there to talk through the process of qualifying as a ski instructor.



Perks reserved for our instructor trainees



1. FREE NORTH FACE JACKET

We provide a uniform North Face jacket for all students. This is important for being identified as part of the working ski school when shadowing ski lessons.

facebook

2. FACEBOOK

We run a dedicated and private Facebook group for everyone signing up to the course so you can get to know each other before you hit the slopes. This is a great place to ask questions about the course and compare notes on preparations.



Free added course extras

1. FRENCH LESSONS

Over the duration of the course you will receive French lessons with a local French teacher. You'll cover the basics, and at the end of the course with the help of your mentor you'll prepare and deliver a lesson plan - in French! Our trainers Tom and Jon are Patentes, meaning they have a French qualification too, and if you are interested in going to Nendaz on our WORK+TRAIN programme, then being able to speak another language will really help you work with international clients.



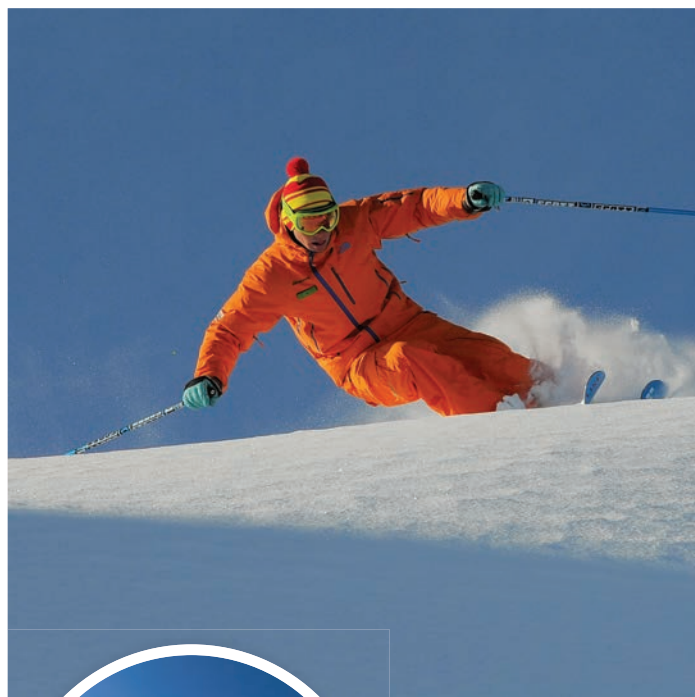
2. MOUNTAIN SAFETY

We run a course with a EMS qualified trainer to teach gap students about mountain safety and avalanche risk. Students will dig snowpits, analyse snow formation, and practice using their avalanche equipment. Mountain safety and avalanche awareness is an important part of instructor training beyond BASI level 2, so this is again a good taster of what's to come, as well as keeping our students safe during the course.



Overview of the course

Week 1	BASI Level 1 exam preparation with mentors Structured Practice
Week 2	BASI Level 1 exam
Weeks 3-5	Ad hoc ski school shadowing Structured Practice Performance training with mentors
Weeks 6-7	Ski school shadowing (4 hrs am) Personal Practice Optional additional coaching
Week 8	BASI Level 2 exam preparation Performance training with mentors
Week 9	BASI Level 2 exam
Week 10	BASI Level 2 exam End of season party



An example day - week 3

8.00am	Sit down chalet breakfast
9.30-1.30	Personal practice time or ski school shadowing
1.30-2.00	Lunch (provided by chalet host at breakfast)
2.00-5.00	Training with mentor: Short turns, carving or variable terrain Central theme
5.00-6.00	Video feedback session or teaching preparation session
7.30-8.30	Dinner in chalet



The gap course programme



THE SKI SHOW SOCIAL (NOV 2013)

All gap students and their parents are invited to an informal gathering at the ski show. This is the perfect opportunity to ask those final questions and to meet fellow students before coming out to France.

WEEK 1:

Preparation to BASI Level 1 exam

In your first week you'll be getting to know your training team and chalet group- as well as finding your feet in resort. All our chalets have wi-fi, but we don't turn it on till week 2 - we've found it helps people get to know each other and explore their new home rather than hiding on Facebook.

Your first week of ski training will be preparing you for your BASI Level 1 exam. This will cover ski technique focusing on short turns, long turns and the Central Theme. You will also be given an introduction to teaching and peer practice sessions to ensure you're fully prepared.

WEEK 2:

BASI Alpine Level 1 Course

This is a 5 day on-snow BASI training and assessment course in which the following subjects are covered and assessed:

- Skiing safely
- Planning, conducting and evaluating an instructing session
- Participation in an accident and emergency activity
- Knowledge and understanding of how to improve personal skiing and instructing performance
- BASI methodology and progressions (Central Theme) and beyond
- The Skier's Code of Conduct
- The Principles of Ski Teaching
- The Structure of Snowsports in the UK
- The role of snowsport agencies in the UK
- Marketing and promoting snowsports in the UK
- Dealing with accidents and emergencies

All course materials are included



Weeks 3 to 8: Training for BASI Level 2 & Ski School Shadowing



The 6 weeks leading up to your BASI Level 2 exam are when you will develop and consolidate your ski technique, and benefit from shadowing Ski School lessons during the busy half term holidays.

ON SNOW TRAINING WITH MENTOR

During these weeks students receive daily ski coaching from our top New Generation instructors and BASI trainers. The sessions work on students' technical performance through individual coaching and group exercises on and off snow. We use video feedback. Evening workshop sessions. Teaching training. Group management. And sometimes adventures on variable terrain and off piste.

SKI SCHOOL SHADOWING

On average students will shadow 12 hours each week during this period. As part of a busy working Ski School you are an important part of delivering a great half term experience to our clients. You can watch firsthand our instructors coaching, and this insight into the 'real life' of a ski instructor is your chance to see group management, and the delivery of fun, safe lessons in action.



And the extras in these weeks

FIRST AID COURSE

Two days of practical first aid training with a British first aid expert. Successful assessment leads to a BASI recognised professional first aid qualification.

AVALANCHE AWARENESS TALK

At the beginning of your training your mentor will take you through an avalanche awareness presentation, showing you some of the danger signs of avalanches and how to avoid them.

MOUNTAIN SAFETY TRAINING

An off-piste session run by a EMS qualified trainer during which students learn about avalanche awareness, using transceivers, snow pit analysis and how to be safe in the mountains.

CHILD PROTECTION MODULE

An essential course for anyone working with children. Completing the child protection module is necessary for qualification as a British ski instructor.





INJURY PREVENTION

We work closely with the local British Physiotherapists who do a seminar on injury prevention as well as being on hand to help with any injuries or sports massage requirements (at reduced rates).

CAREERS SEMINAR & CV WRITING WORKSHOP

Advice from experienced snowsports instructors on the options for moving forward into a career in snowsports. And how to write CVs from the people who receive them!

RECRUITMENT SERVICE

Links to ski schools worldwide to help you find employment and teaching placements. Help with applying for work following the course.

Weeks 9 to 10:



BASI Alpine Level 2 Course

The BASI course consists of two weeks of continual training and assessment. The 10 weeks of work on students' action plans, shadowing experience and help from the mentors throughout the gap course will help drive students to reach their final goals.

On successful qualification students will gain the BASI Ski Instructor Award.

- The content of the course includes:
- Technical skiing (practical)
- Ski teaching (practical)
- Training analysis and practice of teaching skiing using the progression skills from the technical syllabus
- Client care
- Theory and off-snow content
- Safety and fitness for skiing
- Communications
- Lesson planning
- Technical consolidation

BIG CELEBRATION PARTY & AWARDS!



A season in Verbier



Our Swiss gap course is run from Verbier Switzerland. Verbier famously known as the heart of the 4 Valleys ski area and is home to some of the best skiing in the world.

Boasting miles of top-notch pistes, and specialising in itinerary runs, this is seriously special snow.

The Tortin mogul run will give you thrills and keep your knees going for 3,000 vertical feet, and if bumps aren't your thing, there's Mont Gelé, a four-sided pyramid of off piste.

While on the 10 week course you will experience some of Verbier's amazing ski terrain which provides the perfect arena for training for your ski exams.

As well as this you will get to make the most of living in a lively ski resort with its famous apres ski bars and nightlife.

But we think what makes Verbier so special is being right at the heart of a committed and passionate training team.

As well as your fully qualified mentors and BASI coaches, you'll be surrounded by a selected training team of trainee instructors working towards achieving their final ISTD and BASI level 4 qualifications.

We think it's an incredible environment to work and train in, and will appeal to people committed to such an exciting course.

Want to join the team?



Travel to and from resort

New Generation arranges your transfer from Geneva airport and this is included within your course cost. We recommend booking flights well in advance with one of the 'budget airlines' as tickets can be purchased for minimal cost.

We can try to co-ordinate students flying out at the same time.



Insurance

Insurance is compulsory for attending a BASI course and before commencing the course your trainer will check that you are insured. Once you've signed up to the course we'll supply you with a list of recommended providers, as well as a list of questions / areas to check to make sure your insurance packages cover all your needs.



Accommodation to suit your needs



We know that one of the most important parts of creating a successful gap course is the accommodation and food. A comfortable bed and a good meal means time to concentrate on skiing. This is why we offer fully catered chalet with a friendly host.



The package

Mon to Fri 3 meals a day.

Includes breakfast, packed lunch and 2 course evening meal. Breakfast provided during weekends.

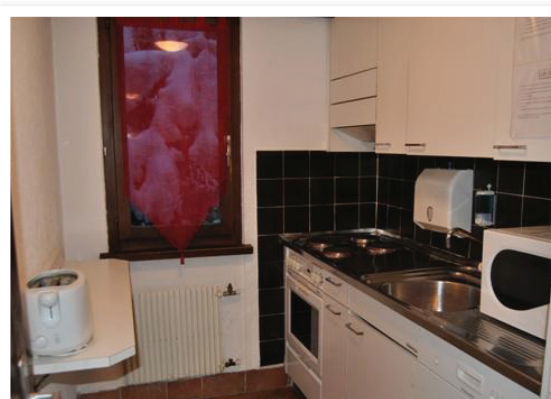
Daily chalet cleaning (except day off)



The lounge

All our chalets have cosy living rooms with space to relax. Each lounge is equipped with a Cable TV, DVD player and Stereo system.

All off-snow lectures will take place in the comfort of the chalets. All chalets have free WIFI.



Verbier Gap course 2014

What's included?



Gap course package	Included
Total price	£8,495
Over 200 hours of on and off snow training	Yes
Personal Performance Training (120 hours on-snow / 30hrs off-snow)	Yes
Shadowing (up to 35 hours)	Yes
BASI Alpine Level 1 (25hrs on-snow / 10hrs off-snow)	Yes
BASI Alpine Level 2 (50hrs on-snow / 20hrs off snow)	Yes
BASI Alpine and Generic Manual and all other course materials	Yes
Video analysis, feedback and assessment	Yes
BASI Associate Membership	Yes
BASI approved First aid course (2 days theory and practical)	Yes
Child Protection Module	Yes
Ski Technician Training	Yes
Careers Advice Seminar	Yes
Mentor to help with action plans and to help structure practice time	Yes
Recruitment Service. CVs, references, placements. Contacts for work Interski/Neige Aventure	Yes
Shadowing and training log book	Yes
Accommodation and food	
Unique hosted chalet style catered accommodation. Breakfast 7 days. Lunch and dinner 5 days.	Yes
Other extras	
Airport transfers	Yes
The North Face gap uniform jacket	Yes
Injury prevention	Yes
Resort support team to help in emergencies	Yes
A season's 4 Valley lift pass (valid December to end of April)	Yes
French lessons	Yes



How to book for 2014



1. VISIT OUR ON-LINE BOOKING SYSTEM:

www.nextgentravel.com/instructorcourses

Our 2013/2014 courses are LIVE online. An initial £500 deposit is required to reserve your place. We will then provide a payment plan so you can pay the rest by instalments.



2. YOU CAN SPEAK TO ONE OF OUR TRAINERS OR EMMA (GAP CO-ORDINATOR) TO:

- Book a free open day in the UK
- Ask questions about the course
- Pay your deposit
- Get in touch with an ex Gap student

Telephone: 0033 479 01 03 18
0844 770 4733 (from UK)

Opening Times (GMT)

Summer	Mon - Fri	08:30 - 12:30
September	Mon - Fri	08:30 - 16:00
December	All Week	07:30 - 18:00



3. SEND US AN EMAIL TO:

instructorcourses@skinewgen.com



facebook®

Find us on:
[facebook.com/newgenap](https://www.facebook.com/newgenap)



Terms and conditions



1. The applicant must have fulfilled all of the course pre-requisites, including a self assessment questionnaire and attending a selection day if deemed necessary.
2. The applicant must be 18 years or older on the first day of the course.
3. The application will only be accepted and secured provided:
 - a) The application is accompanied by a minimum £500 non-refundable and non-transferable initial deposit
 - b) The Chalet Damage Disclaimer is signed and returned
 - c) The applicant accepts these terms and conditions of booking
 - d) The parental consent form is signed by a parent or guardian if the applicant is under 18
4. The second instalment of £1500 in respect of your gap course must be received in full at the New Generation office by 1st August 2013.
5. The balance of your gap course fee must be received in full at the New Generation office by 1st October 2013.
6. All changes to bookings must be received in writing, by fax, email or letter.
7. All students must be insured for their gap course.
8. Cancellation – in the event of cancellation by the student neither the deposit or and subsequent instalments paid are refundable or transferable.
9. The After the gap Alpine Level 3 Course requires a minimum of 5 students to run. The Freeski camp may be shortened if we do not have a minimum of 5 students on it.
10. The gap upgrade content is subject to change in content.
11. All students will be provided with a gap Jacket which they will be required to wear (clean) when taking part in ski school shadowing. A sufficient number of Jackets have been ordered but if sizes are not available New Generation reserves the right to provide a similar alternative jacket.
12. New Generation reserves the right to amend advertised content and dates of the course up to 6 months before the start date. Any modifications will be communicated via email or letter by the 6th July 2013.

BASI and New Generation strongly recommend that all members embarking upon a BASI course take appropriate insurance which covers both cancellation and curtailment.
13. New Generation will refund appropriate monies if the decision is made by New Generation or BASI to cancel all or part of a gap training course.
14. No monies will be refunded by New Generation in the event of an injury sustained whilst participating in the gap course, where injury leads to curtailment of the course; in this instance it is necessary to make an insurance claim.
15. If the venue of the course is adversely affected by snow, weather or any other circumstances, New Generation reserves the right to cancel the course or alter the venue without prior notice or warning.
16. BASI and New Generation reserve the right to refuse training to any applicant who, in the opinion of the BASI and New Generation is unsuitable for Snowsport Instructor training.
17. Any student found under the influence of alcohol or drugs during course contact time will be removed from the course with no refund.
18. In the event that an applicant is refused training on the basis of paragraph 16 and 17, no monies will be refunded.
19. You agree that except for death or personal injury arising through the negligence of BASI or New Generation, BASI and New Generation shall not be liable for any loss or damage arising whether in respect of death, bodily injury, illness suffered or contracted, loss, costs, damages or expenses incurred.
20. It is the individual student's responsibility to ensure that all accommodation, transport and any other facilities provided by BASI or New Generation or their employees or agents, are treated with respect and consideration. We require a guarantee agreement to be signed prior to the arrival of the students.
21. New Generation and BASI will not be responsible for any damage caused by a student or students. Students will be held liable for any costs incurred in such a way and will agree to settle any costs immediately.
22. As an applicant for a BASI and New Generation gap course, whether applying by telephone, fax, email or letter you agree to abide by these conditions.
23. New Generation reserved the right to alter advertised accommodation and chalet but within the advertised package requirements.
24. Meribel students will be issued with a season 3 Valley lift pass. Courchevel and La Tania students will be issued with a Courchevel Valley lift pass, with the option of up to three 3 Valley day upgrades. Lift passes will be issued upon arrival in resort.

